

Features

- » Maintains Bias $> \pm 1^\circ$ of MIN
- » Includes Auto-reset
- » Small and Simple to Integrate Into System
- » Factory adjustable dither frequency
- » Customization Available

Applications

- » Optical Modulator Communications Systems
- » RF and Microwave Photonic Transmitters
- » Spectroscopy Systems
- » Optical Test Systems
- » Optical Modulator Component Evaluation
- » Optical Delay Lines

PHOTONIC SYSTEMS INC.

900 Middlesex Turnpike
Building 5
Billerica, MA 01821
USA

Phone: 978-670-4990
Fax: 978-670-2510
E-mail: info@photonicsinc.com
www.photonicsinc.com

Description

The PSI-2011-44 mini optical modulator bias controller (MBC) offers comprehensive control of external optical modulators from a single, small form factor circuit board. The PSI-2011-44 provides automatic tracking of the MIN bias point as shown in Figure 1. If required, the PSI-2011-44 MBC can be customized by PSI for QUAD- or MAX operation.

Using a standard dither tone set at 1 KHz, the PSI-2011-44 tracks the operating point to within $\pm 1^\circ$ at 1% dither of V_{π} . The dither tone amplitude is factory set to 1% of customer specified nominal V_{π} . A high degree of bias point accuracy is maintained over a wide operating temperature range. Using a common photodetector, the bias point accuracy is easily maintained over a $>10\text{dB}$ range of optical power. The PSI-2011-44 can be plugged into a motherboard or connections can be made through discrete wiring to the appropriate input/output connector pins.

Along with this standard configuration, PSI can modify the PSI-2011-44 to meet system requirements. **Please contact PSI with you application needs.**

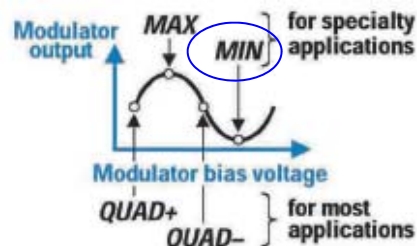
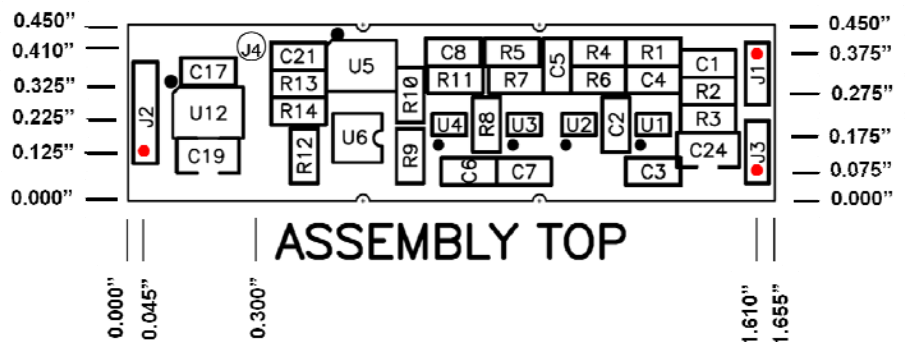


Figure 1– Modulator Transfer

Ordering Information

PSI Part Number	Description
PSI-2011-44	MIN Modulator Bias Controller
	Note: Please specify nominal modulator DC V_{π} at time of order to ensure proper factory set-up

Mechanical Information



Performance Characteristics

Parameter	Condition	Min	Typ	Max	Units
Modulating Signal	Small Signal				
Modulators Supported	LiNbO ₃				
Modulator/Bias-t Capacitance				0.2	μF
Output DC Bias Port Impedance			100		Ω
Output DC Bias Voltage	Less Than Supply Voltage		1.0		V
Dither Frequency			1.0		KHz
Dither Amplitude	Factory set per customer supplied modulator information	20		200	ppmV
Bias Point Error @ MIN	150 to 15 μA photocurrent	≥1° @ 1% of V _π			
DC Supply Voltages		± 8	± 12	± 13	V
DC Operating Current				10	mA

Environmental Characteristics

Parameter	Condition	Min	Typ	Max	Units
Operating Temperature	Within Specifications	0		50	°C
Operating Temperature	Degraded Accuracy (<± 3°)	-20		70	°C
Storage Temperature		-40		85	°C

Pin-out Descriptions

Designator	Pin	Description
J1	1	Photodiode Cathode
	2	Photodiode Anode (Ground)
J2	1	+12 V _{DC}
	2	Ground
	3	-12 V _{DC}
J3	1	Modulator Bias Output Signal
	2	Ground
J4	1	Reset (Short to ground to reset MBC)